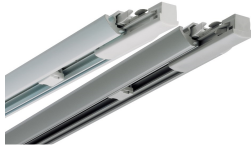


Lytespan LP 1-Circuit - Joiner Track

Lytespan LP single circuit - Joiner Track - 2m - White
2019505



Product features

- Lytespan LP - Single circuit Track Joiner kit, extruded aluminium body, suitable for surface mounting. Supplied with Track Unit, Plug-in Live Coupler, Surface Mounting screws and screw cap covers, (LxWxH) 2000x45x16mm, 1.20kg, White RAL 9016, Class 1, maximum installed load: 1x3840W (1x3680W), fuse: 1x16A, supply cable: 3 x 1.5mm², 240 (230) VAC supply



PRODUCT OVERVIEW

Product name	Lytespan LP single circuit - Joiner Track - 2m - White
Technology	Accessory
Mount	Ceiling surface mounting
Environment	Interior
General application	Hospitality, Museums & Galleries, Retail
ETIM Class	EC000101
E-number FI	4276843
E-number SE	7416006
E-number Norway	3213322
Warranty	5 years
Housing colour	White
Product EAN number	5025768195053

DATA TABLE

General data

Product name	Lytespan LP single circuit - Joiner Track - 2m - White
Technology	Accessory
Mount	Ceiling surface mounting
Environment	Interior
General application	Hospitality, Museums & Galleries, Retail
ETIM Class	EC000101
E-number FI	4276843
E-number SE	7416006
E-number Norway	3213322
Warranty	5 years

Optical data

Adjustable chromaticity	N
-------------------------	---

Electrical data

Mains voltage (V)	230V~
Transformer required	Yes

Lytespan LP 1-Circuit - Joiner Track

Lytespan LP single circuit - Joiner Track - 2m - White
2019505

Physical data

Housing colour	White
Nominal Product Length (mm)	2000
Weight (kg)	1.2

Packaging

Single packaging type	Carton
Product EAN number	5025768195053
Packaging single length / height (cm)	201.0
Packaging single width (cm)	5.0
Packaging single depth (cm)	5.0
Units per outer package	1
Packaging outer length / height (cm)	201.0
Packaging outer width (cm)	5.0
Packaging outer depth (cm)	5.0

TECHNICAL DRAWINGS

