

## SHP-TS Super SHP-TS 35W E27 SLV 0020326



### Product features

- A range of High Pressure Sodium lamps with high xenon pressure boost luminous efficacy up to 150lm/w, - Long life between 24,000 and 32,000 hours, - Strong performance and high reliability, - For use in Car park, Street and Flood lighting applications



## PRODUCT OVERVIEW

Product name	SHP-TS 35W E27 SLV
Technology	HID
Watt (Rated) (W)	35.00
Lamp shape	Tubular shape
Type	SHP-TS
Cap/Base	E27
Lamp finish	Clear
Fixture rating	Open
General application	Logistics & Industry
ETIM Class	EC000821
E-number FI	4844430
E-number Norway	3824254
Warranty	2 years
Luminous flux (lm)	2100
Colour temperature (K)	2050
Light colour	White
CRI (Ra)	20
Colour Variation Initial (SDCM)	N/A
Photobiological Risk Group	Not applicable
Wattage (W)	35.00
Product Voltage (V)	90
Dimmable	No
Average life (Nominal) (h)	25000
Product EAN number	5410288203263

## DATA TABLE

### General data

Product name	SHP-TS 35W E27 SLV
Technology	HID
Watt (Rated) (W)	35.00
Lamp shape	Tubular shape
Type	SHP-TS
Cap/Base	E27

## SHP-TS Super

*SHP-TS 35W E27 SLV*  
0020326

Lamp finish	Clear
Fixture rating	Open
General application	Logistics & Industry
ETIM Class	EC000821
E-number FI	4844430
E-number Norway	3824254
Warranty	2 years

### Optical data

Luminous flux (lm)	2100
Luminous flux (Rated) (lm)	2100
Rated lamp efficacy 100h 50Hz at 25°C (lm/W)	60
Ambient temperature for maximum luminous flux (°C)	25
Colour temperature (K)	2050
Light colour	White
CRI (Ra)	20
Colour Variation Initial (SDCM)	N/A
Adjustable chromaticity	N
Photobiological Risk Group	Not applicable
Rated lumen maint. factor (%) at 2000 h 50Hz	98
Rated lumen maint. factor (%) at 4000 h 50Hz	96
Rated lumen maint. factor (%) at 6000 h 50Hz	94
Rated lumen maint. factor (%) at 8000 h 50Hz	93
Rated lumen maint. factor (%) at 12000 h 50Hz	91
Rated lumen maint. factor (%) at 16000 h 50Hz	90
Rated lumen maint. factor (%) at 20000 h 50Hz	89

### Electrical data

Wattage (W)	35.00
Current (A)	0.490
Mains voltage (V)	220-240V~
Product Voltage (V)	90
Control gear required	Yes
Transformer required	No
Dimmable	No
Lamp Energy Label (class)	G
kWh per 1000 hours burning time	39

### Lifetime data

Average life (Nominal) (h)	25000
Average life (Rated) (h)	25000
Life T90	16000

## SHP-TS Super SHP-TS 35W E27 SLV 0020326

Rated survival factor (%) at 2000 h 50Hz	100
Rated survival factor (%) at 4000 h 50Hz	99
Rated survival factor (%) at 6000 h 50Hz	98
Rated survival factor (%) at 8000 h 50Hz	97
Rated survival factor (%) at 12000 h 50Hz	90
Rated survival factor (%) at 16000 h 50Hz	79
Rated survival factor (%) at 20000 h 50Hz	66

### Physical data

Nominal Product Length (mm)	156
Nominal Product Diameter (mm)	39
Max. Lamp Length (mm) - C/L	156.0
Max. Lamp Diameter (mm) - D	39
Weight (kg)	0.053

### Packaging

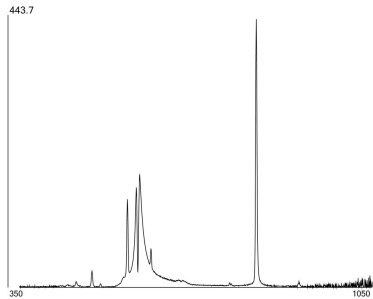
Single packaging type	Carton
Product EAN number	5410288203263
Packaging single length / height (cm)	20.0
Packaging single width (cm)	4.2
Packaging single depth (cm)	4.2
DUN14 (outer)	15410288203260
Units per outer package	40
Packaging outer length / height (cm)	42.0
Packaging outer width (cm)	28.0
Packaging outer depth (cm)	21.0

### Safety data

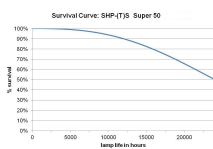
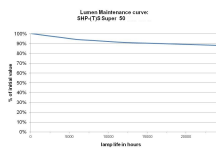
Lamp mercury content (mg)	7.20
Breakage cleaning instructions	Applicable
Recommendation for disposal at end of life	Applicable
Special purpose lamp	No
Suitable for household illumination	Yes
Safety message	Not Suitable for totally enclosed fixtures
Safety message	Not suitable for household

## PHOTOMETRY

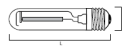
## SHP-TS Super SHP-TS 35W E27 SLV 0020326



### TECHNICAL DRAWINGS



SHP-TS



SHP-TS	35W	50W	70W	100W	150W	250W	400W
L	156	156	156	211	211	260	292
D	39	39	39	48	48	48	48



0020326



**35**  
kWh/1000h



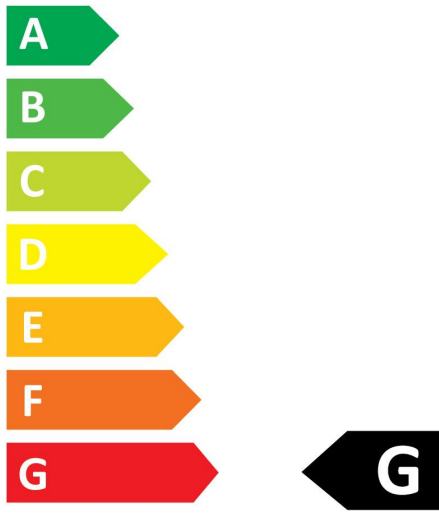
2019/2015

# SYLVANIA

SHP-TS Super  
SHP-TS 35W E27 SLV  
0020326



0020326



**35**  
kWh/1000h



2019/2015