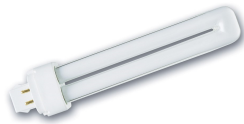


Lynx DE

Lynx-DE Superia 18W/865 10WAY SLV

0025950



Product features

- Compact and high performance double bend 2-bend pin lamp, - Suitable for operation on electronic control gear (DE type) and magnetic ballast (D version), - Dimmable with suitable dimmer, - Excellent colour rendering, - Suitable for emergency lighting



PRODUCT OVERVIEW

| | |
|----------------------------|---|
| Product name | Lynx-DE Superia 18W/865 10WAY SLV |
| Technology | Compact Fluorescent |
| Watt (Rated) (W) | 18 |
| Lamp shape | Other |
| Type | Lynx DE |
| Cap/Base | G24q-2 |
| Lamp finish | Frosted/Coated |
| Fixture rating | Open |
| General application | Education, Hospitality, Logistics & Industry, Museums & Galleries, Office, Retail, Residential & Consumer |
| ETIM Class | EC000087 |
| E-number FI | 4944133 |
| Luminous flux (lm) | 1200 |
| Colour temperature (K) | 6500 |
| Light colour | Daylight |
| CRI (Ra) | 80 |
| Wattage (W) | 18 |
| Product Voltage (V) | 220 |
| Dimmable | No |
| Average life (Nominal) (h) | 12000 |
| Product EAN number | 5410288259505 |

DATA TABLE

General data

| | |
|---------------------|---|
| Product name | Lynx-DE Superia 18W/865 10WAY SLV |
| Technology | Compact Fluorescent |
| Watt (Rated) (W) | 18 |
| Lamp shape | Other |
| Type | Lynx DE |
| Cap/Base | G24q-2 |
| Lamp finish | Frosted/Coated |
| Fixture rating | Open |
| General application | Education, Hospitality, Logistics & Industry, Museums & Galleries, Office, Retail, Residential & Consumer |

Lynx DE

Lynx-DE Superia 18W/865 10WAY SLV
0025950

| | |
|-------------|----------|
| ETIM Class | EC000087 |
| E-number FI | 4944133 |

Optical data

| | |
|--|----------|
| Luminous flux (lm) | 1200 |
| Luminous flux (Rated) (lm) | 1160 |
| Rated lamp efficacy 100h 50Hz at 25°C (lm/W) | 67 |
| Ambient temperature for maximum luminous flux (°C) | 25 |
| Colour temperature (K) | 6500 |
| Light colour | Daylight |
| Colour Code | 865 |
| CRI (Ra) | 80 |
| Adjustable chromaticity | N |
| Rated lumen maint. factor (%) at 2000 h 50Hz | 85 |
| Rated lumen maint. factor (%) at 4000 h 50Hz | 84 |
| Rated lumen maint. factor (%) at 8000 h 50Hz | 81 |

Electrical data

| | |
|---------------------------------|--------|
| Wattage (W) | 18 |
| Starting time (max) (s) | 10 Sec |
| Current (A) | 0.22 |
| Product Voltage (V) | 220 |
| Control gear required | Yes |
| Transformer required | No |
| Dimmable | No |
| Lamp Energy Label (class) | G |
| kWh per 1000 hours burning time | 18 |

Lifetime data

| | |
|---|-------|
| Average life (Nominal) (h) | 12000 |
| Average life (Rated) (h) | 12000 |
| Rated survival factor (%) at 2000 h 50Hz | 96 |
| Rated survival factor (%) at 4000 h 50Hz | 90 |
| Rated survival factor (%) at 6000 h 50Hz | 80 |
| Rated survival factor (%) at 8000 h 50Hz | 72 |
| Rated survival factor (%) at 12000 h 50Hz | 70 |
| Rated survival factor (%) at 16000 h 50Hz | 71 |

Physical data

| | |
|-----------------------------------|-------|
| Max. Length base to base (mm) - A | 147 |
| Max. Lamp Diameter (mm) - D | 35 |
| Weight (kg) | 0.052 |

Lynx DE

Lynx-DE Superia 18W/865 10WAY SLV

0025950

Packaging

| | |
|---------------------------------------|----------------|
| Single packaging type | Carton |
| Product EAN number | 5410288259505 |
| Packaging single length / height (cm) | 15.5 |
| Packaging single width (cm) | 3.6 |
| Packaging single depth (cm) | 3.6 |
| DUN14 (outer) | 15410288259502 |
| Units per outer package | 10 |
| Packaging outer length / height (cm) | 16.6 |
| Packaging outer width (cm) | 8.0 |
| Packaging outer depth (cm) | 18.7 |

Safety data

| | |
|--|------------|
| Lamp mercury content (mg) | 2.5 |
| Breakage cleaning instructions | Applicable |
| Recommendation for disposal at end of life | Applicable |
| Special purpose lamp | No |
| Dry applications use only | Yes |
| Suitable for household illumination | Yes |

TECHNICAL DRAWINGS

