

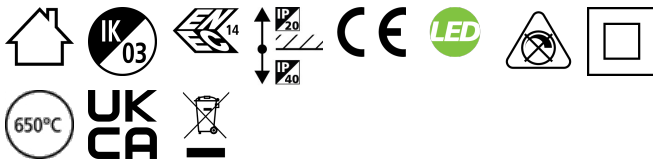
START Panel Flat UGR19 1200x600

START Panel Flat UGR19 1200x600 5500Lm 840
0047235



Product features

- Edge lit LED flat panel with low glare (UGR<19). Low Flicker, 55 W, Neutral White, 4000 K, 5500 lumens, 100 lm/W, Average lifespan: 120.000Hrs, prismatic diffuser, aluminium frame, steel body, electronic non dimmable driver. (HxWxD) 10.8 x 1195 x 595 mm



PRODUCT OVERVIEW

Product name	START Panel Flat UGR19 1200x600 5500Lm 840
Technology	LED
Housing	Aluminium
Mount	Ceiling recessed mounting, Ceiling surface mounting, Suspended
Environment	Interior
General application	Education, Office
ETIM Class	EC002892
E-number FI	4276956
Warranty	5 years
Fixture luminous flux (lm)	5,500
Luminaire efficacy (lm/W)	100
Colour temperature (K)	4000
Light colour	Neutral White
CRI (Ra)	80
Colour Variation Initial (SDCM)	SDCM5
Beam Angle (°)	90
Glare control	< 19
Photobiological Risk Group	RG0
Total power consumption (W)	55
Electrical protection	Class II
Control gear type	LED driver constant current
Dimmable	No
LED Flickering Rate	Ultra low (5% or less)
Housing colour	RAL 9003 - Signal white
IP rating	IP40/20
IK rating	IK03
Product EAN number	5410288472355

DATA TABLE

General data

Product name	START Panel Flat UGR19 1200x600 5500Lm 840
Technology	LED
Housing	Aluminium

START Panel Flat UGR19 1200x600

START Panel Flat UGR19 1200x600 5500Lm 840
0047235

Mount	Ceiling recessed mounting, Ceiling surface mounting, Suspended
Environment	Interior
General application	Education, Office
Operating temperature range (°C)	-20°C - 40°C
Performance ambient temperature Tq (°C)	25
ETIM Class	EC002892
E-number FI	4276956
Warranty	5 years

Optical data

Fixture luminous flux (lm)	5,500
Luminaire efficacy (lm/W)	100
Colour temperature (K)	4000
Light colour	Neutral White
CRI (Ra)	80
Colour Variation Initial (SDCM)	SDCM5
Beam Angle (°)	90
Distribution type	Symmetric
Glare control	< 19
Photobiological Risk Group	RG0

Electrical data

Total power consumption (W)	55
Mains voltage (V)	220-240V~
Lamp power factor	0.9
THD (at 230 V, 50 Hz, full load, at 100% dimming level) xx.x %	15.0
Electrical protection	Class II
Control gear type	LED driver constant current
Dimmable	No
Drive current (mA)	1400
Inrush Current (A)	20
Inrush Duration (µs)	100
Glow Wire Test (°C)	650
Energy Efficiency Class (A->G) of contained light source	D
Nominal Frequency (Hz)	50/60Hz
LED Flickering Rate	Ultra low (5% or less)
Max. Luminaires per 10A C Breaker	40
Max. Luminaires per 13A C Breaker	50
Max. Luminaires per 16A C Breaker	60
Max. Luminaires per 20A C Breaker	80

Lifetime data

Lifespan L70 B50	120000
------------------	--------

Physical data

Housing colour	RAL 9003 - Signal white
IP rating	IP40/20

START Panel Flat UGR19 1200x600

START Panel Flat UGR19 1200x600 5500Lm 840
0047235

IK rating	IK03
Diffuser finish	Prismatic
Nominal Product Length (mm)	1195
Nominal Product Width (mm)	595
Nominal Product Height (mm)	10.8
Weight (kg)	2.861
Recessed Depth (mm)	39

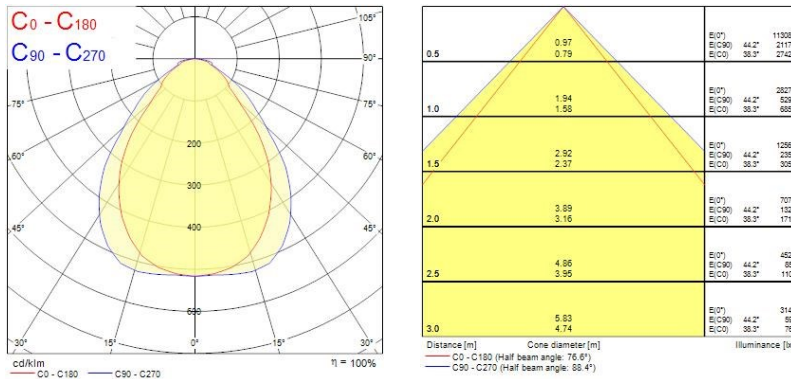
Packaging

Single packaging type	Carton
Product EAN number	5410288472355
Packaging single length / height (cm)	33.0
Packaging single width (cm)	3.5
Packaging single depth (cm)	127.5
DUN14 (outer)	15410288472352
Units per outer package	2
Packaging outer length / height (cm)	129.5
Packaging outer width (cm)	9.0
Packaging outer depth (cm)	35.0

Safety data

Optimal operating condition (°C)	-20-40
---	--------

PHOTOMETRY



TECHNICAL DRAWINGS

