

Gro-Lux® HPS GRO-LUX SHP-TS 600W / 400V 0020809



Product features

- Gro-Lux High Pressure Sodium 600W/400V grow lamp | Patented arc tube delivers the highest photosynthetic efficiency | Performance maintained at an exceptional level due to improved structure of the outer bulb, - Optimised for the highest Phytolumens or PAR output | Industry leading lumen maintenance of 95% at the end of life | For use as complete or additional artificial lighting of plants | Recommended for use in greenhouses and indoor lighting.



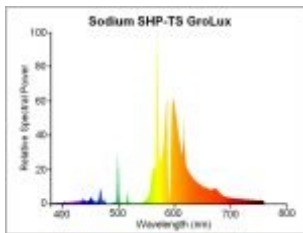
PRODUCT OVERVIEW

| | |
|----------------|----------------------------|
| Product name | GRO-LUX SHP-TS 600W / 400V |
| Technology | HID |
| Type | SHP-TS |
| Cap/Base | E40 |
| Lamp finish | Clear |
| Fixture rating | Open |

Gro-Lux® HPS GRO-LUX SHP-TS 600W / 400V 0020809

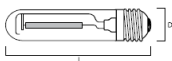
| | |
|----------------------------|---------------|
| General application | SPG |
| ETIM Class | EC000821 |
| E-number FI | 4844456 |
| E-number Norway | 3802875 |
| Luminous flux (lm) | 88000 |
| Colour temperature (K) | 1950 |
| Light colour | Grolux |
| CRI (Ra) | 20 |
| Wattage (W) | 620 |
| Product Voltage (V) | 200 |
| Dimmable | Yes |
| Average life (Nominal) (h) | 24000 |
| Product EAN number | 5410288208091 |

PHOTOMETRY



TECHNICAL DRAWINGS

SHP-TS GROLUX



| SHP-TS GroLux | 250W | 400W | 600W |
|---------------|------|------|------|
| L | 260 | 292 | 292 |
| D | 48 | 48 | 48 |