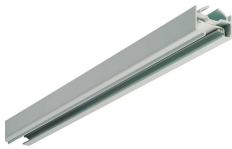


## Lytespan 1-Circuit - Track Unit

*Lytespan 1 single circuit - 2m - standard track unit - white*

2036016



### Product features

- Lytespan 1 - Single Circuit Track, extruded aluminium body, suitable for surface mounting and suspending, (LxWxH) 2000x30x20mm, 1.00kg, White RAL 9016, Class 1, maximum installed load: 1x3840W (1x3680W), fuse: 1x16A, supply cable: 3 x 1.5mm<sup>2</sup>, 240 (230) VAC supply



## PRODUCT OVERVIEW

Product name	Lytespan 1 single circuit - 2m - standard track unit - white
Technology	Accessory
Mount	Ceiling surface mounting
Environment	Interior
General application	Hospitality, Museums & Galleries, Retail
ETIM Class	EC000101
Warranty	5 years
Housing colour	White
Product EAN number	5025768360161

## DATA TABLE

### General data

Product name	Lytespan 1 single circuit - 2m - standard track unit - white
Technology	Accessory
Mount	Ceiling surface mounting
Environment	Interior
General application	Hospitality, Museums & Galleries, Retail
ETIM Class	EC000101
Warranty	5 years

### Optical data

Adjustable chromaticity	N
-------------------------	---

### Electrical data

Mains voltage (V)	230V~
Transformer required	Yes

### Physical data

Housing colour	White
Nominal Product Length (mm)	2000
Weight (kg)	1.0

## Lytespan 1-Circuit - Track Unit

*Lytespan 1 single circuit - 2m - standard track unit - white*

2036016

### Packaging

Single packaging type	Carton
Product EAN number	5025768360161
Packaging single length / height (cm)	205.0
Packaging single width (cm)	4.0
Packaging single depth (cm)	4.0
Units per outer package	1
Packaging outer length / height (cm)	205.0
Packaging outer width (cm)	4.0
Packaging outer depth (cm)	4.0

### TECHNICAL DRAWINGS

---