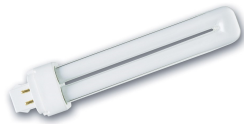


Lynx DE

Lynx-DE Superia 26W/827 G24Q-3 SLV

0025919



Product features

- Compact and high performance double bend 2-bend pin lamp, - Suitable for operation on electronic control gear (DE type) and magnetic ballast (D version), - Dimmable with suitable dimmer, - Excellent colour rendering, - Suitable for emergency lighting



PRODUCT OVERVIEW

Product name	Lynx-DE Superia 26W/827 G24Q-3 SLV
Technology	Compact Fluorescent
Watt (Rated) (W)	26
Lamp shape	Other
Type	Lynx DE
Cap/Base	G24q-3
Lamp finish	Frosted/Coated
Fixture rating	Open
General application	Education, Hospitality, Logistics & Industry, Museums & Galleries, Office, Retail, Residential & Consumer
ETIM Class	EC000087
E-number FI	4944116
E-number SE	8357378
Luminous flux (lm)	1800
Colour temperature (K)	2700
Light colour	Homelight
CRI (Ra)	82
Wattage (W)	26
Product Voltage (V)	220
Dimmable	No
Average life (Nominal) (h)	12000
Product EAN number	5410288259192

DATA TABLE

General data

Product name	Lynx-DE Superia 26W/827 G24Q-3 SLV
Technology	Compact Fluorescent
Watt (Rated) (W)	26
Lamp shape	Other
Type	Lynx DE
Cap/Base	G24q-3
Lamp finish	Frosted/Coated
Fixture rating	Open

Lynx DE

Lynx-DE Superia 26W/827 G24Q-3 SLV

0025919

General application	Education, Hospitality, Logistics & Industry, Museums & Galleries, Office, Retail, Residential & Consumer
ETIM Class	EC000087
E-number FI	4944116
E-number SE	8357378

Optical data

Luminous flux (lm)	1800
Luminous flux (Rated) (lm)	1800
Rated lamp efficacy 100h 50Hz at 25°C (lm/W)	66
Ambient temperature for maximum luminous flux (°C)	25
Colour temperature (K)	2700
Light colour	Homelight
Colour Code	827
CRI (Ra)	82
Adjustable chromaticity	N
Rated lumen maint. factor (%) at 2000 h 50Hz	85
Rated lumen maint. factor (%) at 4000 h 50Hz	84
Rated lumen maint. factor (%) at 8000 h 50Hz	81

Electrical data

Wattage (W)	26
Watt (Rated) - High frequency (W)	25.5
Starting time (max) (s)	10 Sec
Current (A)	0.325
Product Voltage (V)	220
Control gear required	Yes
Transformer required	No
Dimmable	No
Lamp Energy Label (class)	G
kWh per 1000 hours burning time	28

Lifetime data

Average life (Nominal) (h)	12000
Average life (Rated) (h)	12000
Rated survival factor (%) at 2000 h 50Hz	96
Rated survival factor (%) at 4000 h 50Hz	90
Rated survival factor (%) at 6000 h 50Hz	80
Rated survival factor (%) at 8000 h 50Hz	72
Rated survival factor (%) at 12000 h 50Hz	70
Rated survival factor (%) at 16000 h 50Hz	71

Physical data

Max. Length base to base (mm) - A	164
-----------------------------------	-----

Lynx DE

Lynx-DE Superia 26W/827 G24Q-3 SLV
0025919

Max. Lamp Diameter (mm) - D	35
Weight (kg)	0.058

Packaging

Single packaging type	Carton
Product EAN number	5410288259192
Packaging single length / height (cm)	17.3
Packaging single width (cm)	3.6
Packaging single depth (cm)	3.6
DUN14 (outer)	15410288259199
Units per outer package	10
Packaging outer length / height (cm)	18.4
Packaging outer width (cm)	8.0
Packaging outer depth (cm)	18.7

Safety data

Lamp mercury content (mg)	2.5
Breakage cleaning instructions	Applicable
Recommendation for disposal at end of life	Applicable
Special purpose lamp	No
Dry applications use only	Yes
Suitable for household illumination	Yes

TECHNICAL DRAWINGS

