

SYLVANIA



Reliability and Performance

ToLEDo™ Performer

The ToLEDo™ Performer series is a direct retrofit solution to replace high-pressure mercury vapor lamps. It is a quick, safe and easy way to upgrade traditional HID installation to LED while keeping the initial investment low.

sylvania-lighting.com

ToLEDo™ Performer T-Series



The ToLEDo™ Performer T-Series is a direct retrofit solution to replace high-pressure mercury vapour lamps. It is a quick, safe and easy way to upgrade traditional HID installation to LED while keeping the initial investment low. The robust construction, wide operating temperature and long rated lifetime of 50,000H make this an ideal product for factories, warehouses, industries, street lighting, post-top lighting, etc.

Features

- Direct retrofit replacement for high-pressure mercury vapor lamps (HPMV)
- 50,000 hours average rated lifetime
- Up to 78% energy saving compared to the standard high-pressure mercury vapor lamps
- Mercury-free solution
- Lower maintenance cost
- High lumen efficacy - up to 131lm/W
- Dual operating mode – compatible with HPMV magnetic ballast and also, suitable for AC direct mains 100-240V operation
- High surge voltage protection: 4kV
- Suitable for both open and enclosed luminaires
- Wide light distribution
- High switching cycles – 200,000X
- High colour rendering – CRI80
- Minimum and maximum operating temperature: -30°C to 50°C

Product information

Code	Description	Voltage (V)	Power (W)	Luminous Flux (lm)	Efficiency (lm/W)	Colour Temp (K)	CRI	Base	Life (Hours)	Dimmable (Y/N)	Energy Class	IP Rating	Packaging Qty
ToLEDo™ Performer T-Series													
0028425	ToLEDo Performer T60 3100lm 830 E27 SL	100-240	27	3100	115	3000	80	E27	50,000	N	A+	IP42	6
0028426	ToLEDo Performer T85 4100lm 830 E27 SL	100-240	36	4100	114	3000	80	E27	50,000	N	A+	IP42	6
0028427	ToLEDo Performer T85 6100lm 830 E40 SL	100-240	54	6100	113	3000	80	E40	50,000	N	A+	IP42	6
0028428	ToLEDo Performer T130 V2 9500lm 830 E40 SL	120-240	80	9500	119	3000	80	E40	50,000	N	A++	IP42	4
0028429	ToLEDo Performer T130 V2 12000lm 830 E40 SL	120-240	100	12,000	120	3000	80	E40	50,000	N	A++	IP42	4
0028369	ToLEDo Performer T60 2300lm 840 E27 SL	100-240	18	2300	128	4000	80	E27	50,000	N	A++	IP42	6
0028370	ToLEDo Performer T60 3400lm 840 E27 SL	100-240	27	3400	126	4000	80	E27	50,000	N	A++	IP42	6
0028371	ToLEDo Performer T85 4500lm 840 E27 SL	100-240	36	4500	125	4000	80	E27	50,000	N	A++	IP42	6
0028373	ToLEDo Performer T85 6800lm 840 E40 SL	100-240	54	6800	126	4000	80	E40	50,000	N	A++	IP42	6
0028379	ToLEDo Performer T130 V2 10500lm 840 E40 SL	120-240	80	10,500	131	4000	80	E40	50,000	N	A++	IP42	4
0028380	ToLEDo Performer T130 V2 13000lm 840 E40 SL	120-240	100	13,000	130	4000	80	E40	50,000	N	A++	IP42	4
0028381	ToLEDo Performer T130 V2 15000lm 840 E40 SL	120-240	120	15,000	125	4000	80	E40	50,000	N	A++	IP42	4

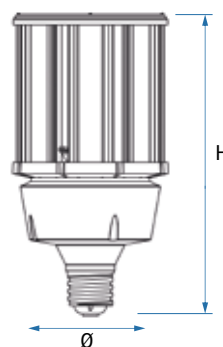
Additional Images



*Made to order

Dimensions (mm)

	Diameter (Ø)	Height (H)	Net Weight (Kg)
2300lm	60	150	0.25
3100lm/3400lm	60	175	0.31
4100lm/4500lm	85	204	0.63
6100lm/6800lm	85	245	0.77
9500lm/10,500lm	130	250	1.33
12,000lm/13,000lm	130	265	1.45
15,000lm	130	286	1.58



ToLEDo™ Performer H-Series



The ToLEDo™ Performer H-Series is designed for replacing HID lamps for high-bay luminaires to maximise energy savings with wide light distribution. The detachable microwave sensor help automate light management and increase energy savings. It is a quick, safe and easy way to upgrade traditional HID installation to LED while keeping the initial investment low. The robust construction, wide operating temperature and long rated lifetime of 50,000H make this an ideal product for factories, warehouses, industries, etc.

Features

- Direct retrofit replacement for high-pressure mercury vapor lamps (HPMV)
- 50,000 hours average rated lifetime
- Up to 71% energy saving compared to the standard high-pressure mercury vapor lamps
- Detachable 3.5mm jack plug microwave sensor allow to adjust hold-time and standby brightness level
- Mercury-free solution
- Lower maintenance cost
- High lumen efficacy - up to 135lm/W
- Dual operating mode – compatible with HPMV magnetic ballast and also, suitable for AC direct mains 220-240V operation
- Up and down light distribution
- High surge voltage protection: 4kV
- Suitable for both open and enclosed luminaires.
- Wide light distribution.
- High switching cycles – 200,000X
- High colour rendering – CRI80
- Minimum and maximum operating temperature: -30°C to 50°C

Product information

Code	Description	Voltage (V)	Power (W)	Luminous Flux (lm)	Efficiency (lm/W)	Colour Temp (K)	CRI	Base	Life (Hours)	Equivalent Wattage (W)	Dimmable (Y/N)	Energy Class	IP Rating	Packaging Qty
ToLEDo™ Performer T-Series														
0028377	ToLEDo Performer H200 10500lm 840 E40 SL	220-240	80	10500	131	4000	80	E40	50,000	550	Y*	A++	IP20	4
0028378	ToLEDo Performer H230 15500lm 840 E40 SL	220-240	115	15500	135	4000	80	E40	50,000	800	Y*	A++	IP20	4

* Preset dimming - only when used with microwave sensor

Additional Images



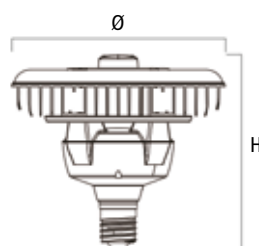
H200 10,500lm



H230 15,500lm

Dimensions (mm)

	Diameter (Ø)	Height (H)	Net Weight (Kg)
0028377	200	195	1.3
0028378	230	210	1.7



ToLEDo™ Performer Microwave Sensor



Features

- The ToLEDo™ Performer H-Series can be used with or without microwave sensor
- Easy to install and remove
- Detachable 3.5mm jack plug
- Maximum detection diameter - 12 meters
- Maximum detection height - 10 meters
- Hold time means full light output and not in standby mode.
- Hold time settings - 30 secs, 90 secs, 5 mins and 10 mins
- Standby brightness settings - 0% (zero light output), 20%, 40% and 60%
- Only works with ToLEDo™ Performer H-Series

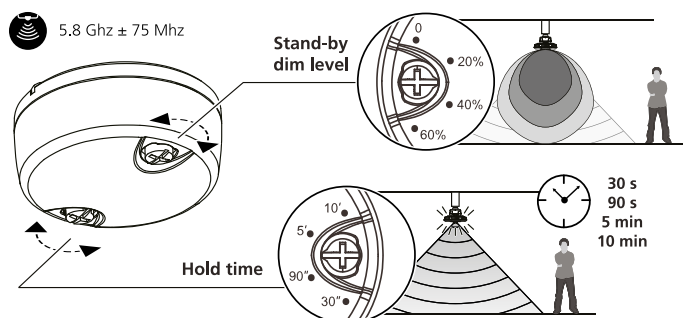
Additional Images



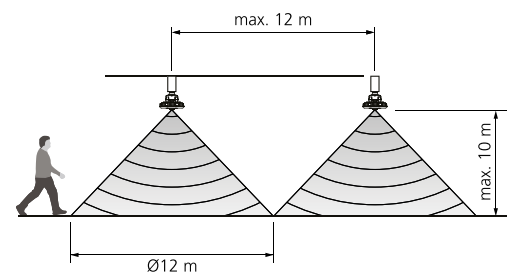
Dimensions (mm)



ToLEDo™ Performer Microwave Sensor Functions



ToLEDo™ Performer Microwave Sensor Range



HPMV Magnetic Ballast (CCG) Compatibility Overview

Code	Description	50W HPMV Ballast	80W HPMV Ballast	125W HPMV Ballast
0028425	ToLEDo Performer T60 3100lm 830 E27 SL	✓	✓	✓
0028426	ToLEDo Performer T85 4100lm 830 E27 SL	✓	✓	✓
0028369	ToLEDo Performer T60 2300lm 840 E27 SL	✓	✓	✓
0028370	ToLEDo Performer T60 3400lm 840 E27 SL	✓	✓	✓
0028371	ToLEDo Performer T85 4500lm 840 E27 SL	✓	✓	✓

Code	Description	250W HPMV Ballast	400W HPMV Ballast
0028427	ToLEDo Performer T85 6100lm 830 E40 SL	✓	✓
0028428	ToLEDo Performer T130 V2 9500lm 830 E40 SL	✓	✓
0028429	ToLEDo Performer T130 V2 12000lm 830 E40 SL	✓	✓
0028373	ToLEDo Performer T85 6800lm 840 E40 SL	✓	✓
0028379	ToLEDo Performer T130 V2 10500lm 840 E40 SL	✓	✓
0028380	ToLEDo Performer T130 V2 13000lm 840 E40 SL	✓	✓
0028381	ToLEDo Performer T130 V2 15000lm 840 E40 SL	✓	✓
0028377	ToLEDo Performer H200 10500lm 840 E40 SL	✓	✓
0028378	ToLEDo Performer H230 15500lm 840 E40 SL	✓	✓

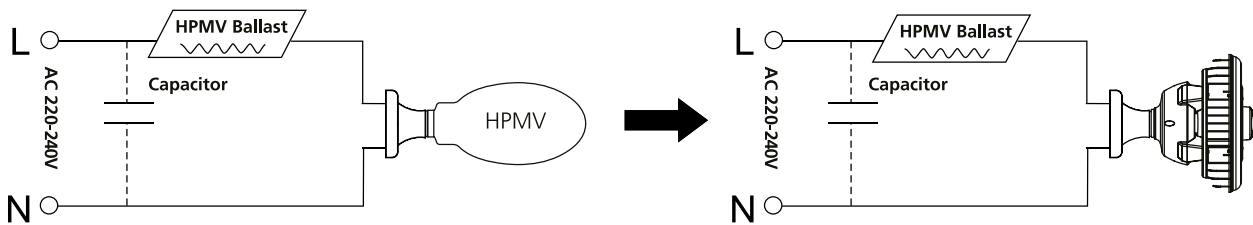


Installation instructions

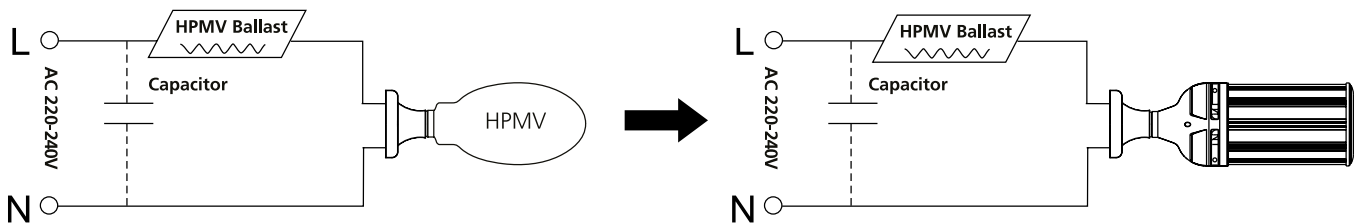
ToLEDo™ Performer

Magnetic / CCG ballast

⚙️ High Pressure Mercury Vapour (HPMV) Magnetic (CCG) ballast

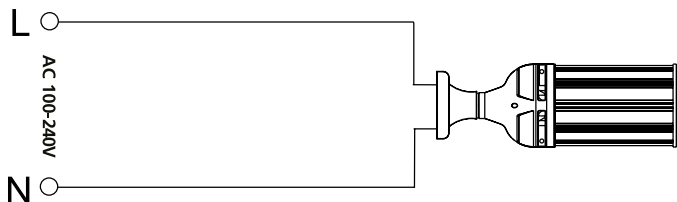


⚙️ High Pressure Mercury Vapour (HPMV) Magnetic (CCG) ballast

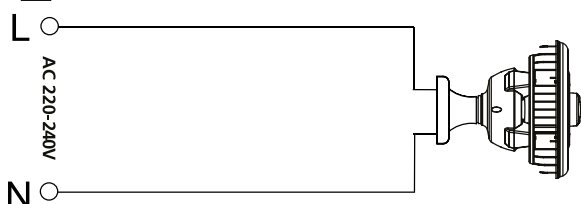


Direct Mains

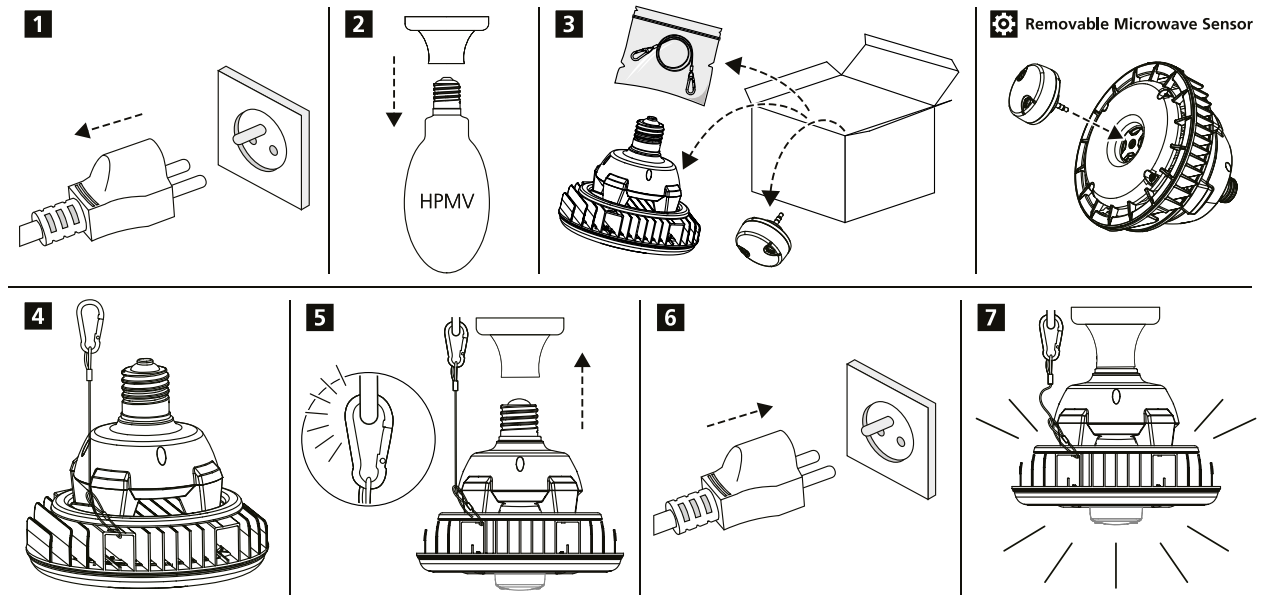
⚙️ AC 100-240V / Direct Mains



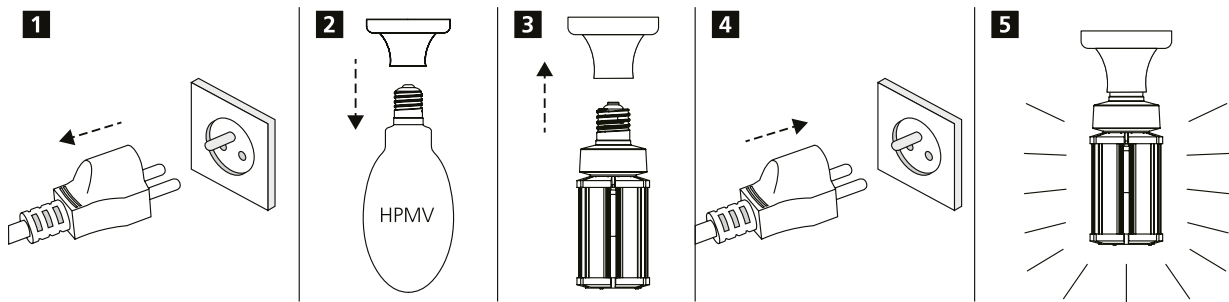
⚙️ AC 220-240V / Direct Mains



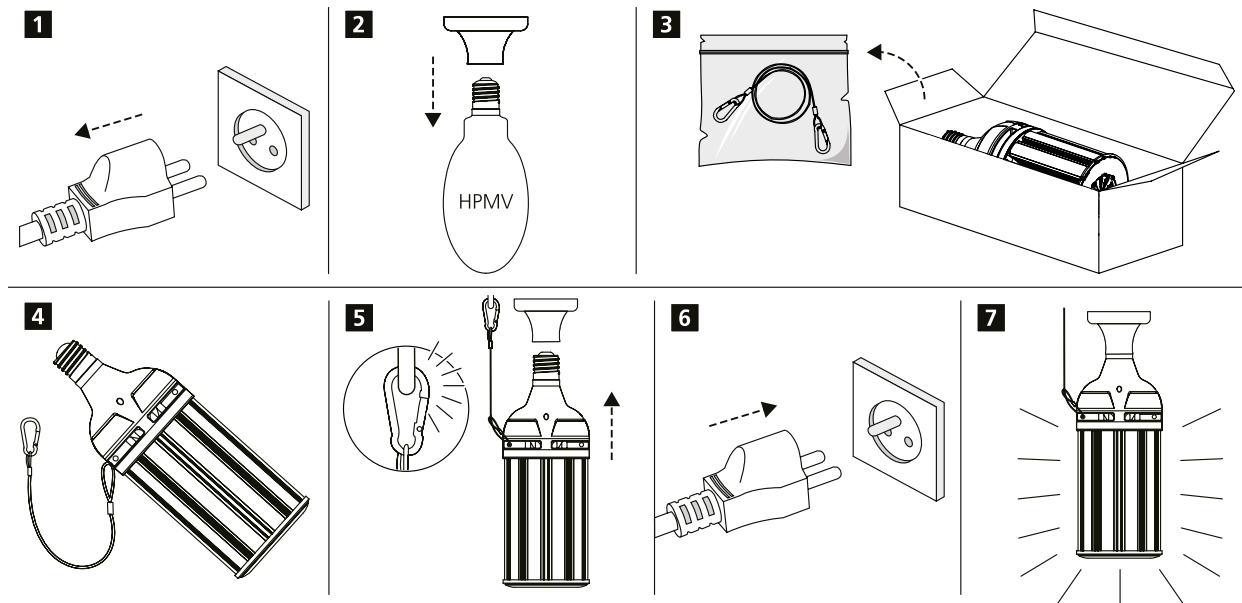
ToLEDo Performer H200 / H230



ToLEDo Performer T60 / T85



ToLEDo Performer T130



SYLVANIA



CE UK
CA



Although every effort has been made to ensure accuracy in the compilation of the technical detail within this publication, specifications and performance data are constantly changing. Current details should therefore be checked with Feilo Sylvania International Group Kft. Copyright Feilo Sylvania International Group Kft. August 2020.

sylvania-lighting.com

A Feilo Sylvania Company